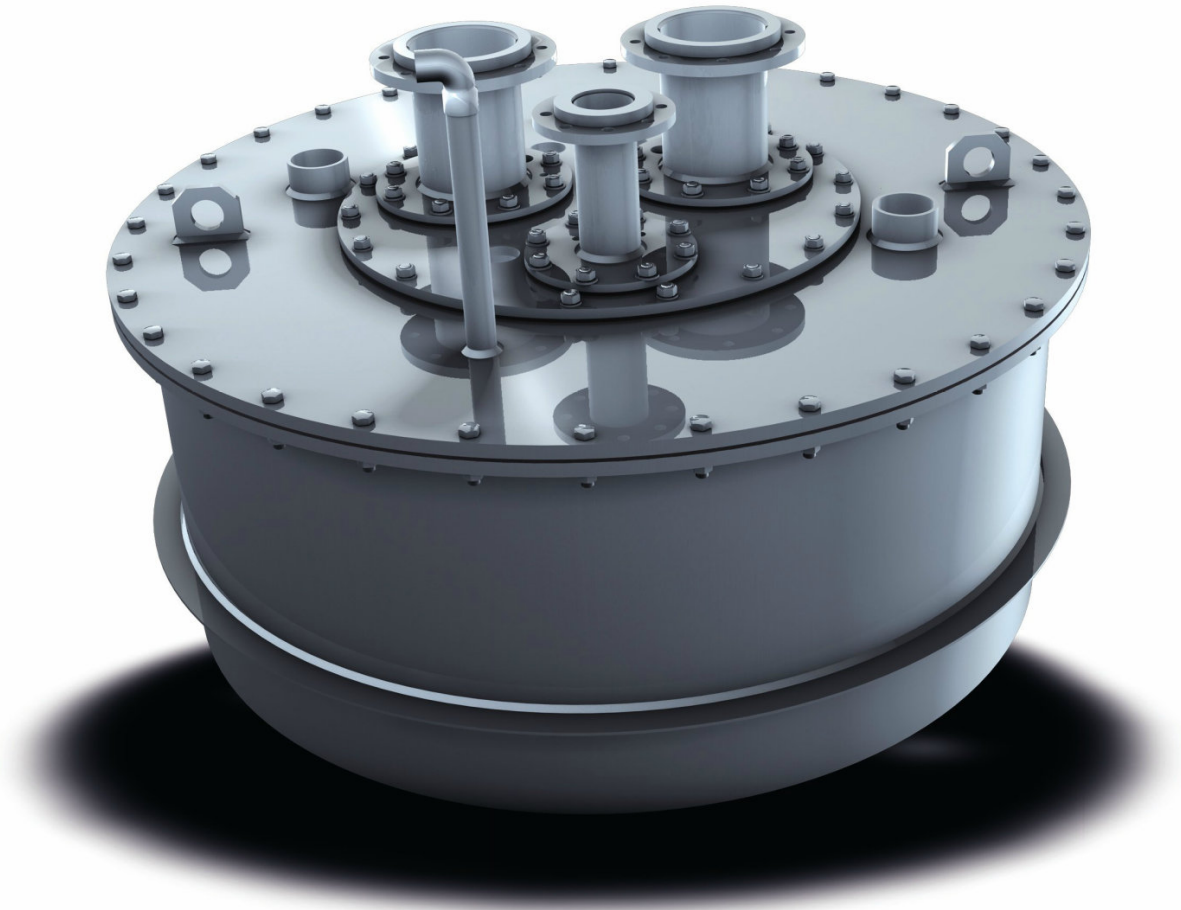




**STAINLESS STEEL**  
Maintenance- free Permanent



Tradition - Quality - Innovation - Partnership- Worldwide

**E+M DRILLING TECHNOLOGIES GMBH**

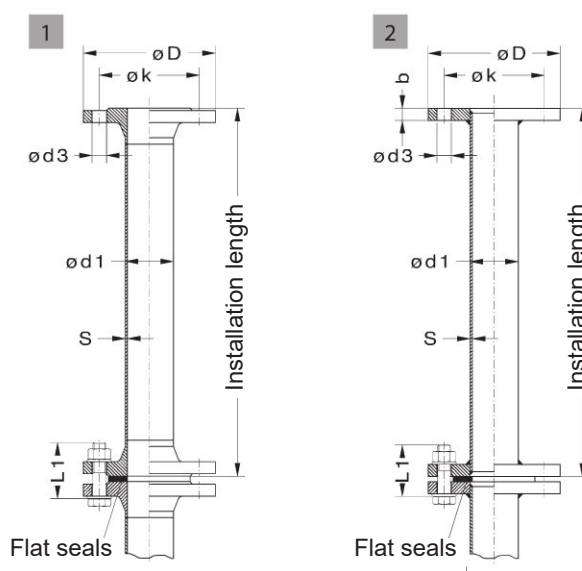


## E+M - RISER PIPES WITH FLANGES

Pipe connector with welded- on flanges and flat flanges (cursive numbers)																	
Pipe DIN 2463			Flange DIN 2633 PN 16				Nuts** DIN 934 Screws** DIN 931			Washer ** DIN 125		Pipe weight for installation length					
DN	S	d1	D	b	k	d3	Number of holes	Thread	L1	ø	Amount	1	2	3	4	5	6
50	2,0	60,3	165	-	125	18	4	M16	70	17	8	8	11	14	17	19	22
	2,0	60,3	165	15	125	18	4	M16	60	17	8	7	10	13	16	18	21
65	2,0	76,1	185	-	145	18	4/8	M16	70	17	8/16	10	13	17	21	24	28
	2,0	76,1	185	15	145	18	4/8	M16	60	17	8/16	9	12	16	20	23	27
80	2,6	88,9	200	-	160	18	8	M16	75	17	16	13	19	24	30	36	41
	2,6	88,9	200	15	160	18	8	M16	60	17	16	11	17	22	28	34	39
100	2,5	114,3	220	-	180	18	8	M16	75	17	16	16	24	31	38	45	52
	2,5	114,3	220	15	180	18	8	M16	60	17	16	13	20	27	35	42	49
125	3,0	139,7	250	-	210	18	8	M16	80	17	16	23	33	43	53	63	73
	3,0	139,7	250	16	210	18	8	M16	60	17	16	18	28	38	48	59	69
150	3,0	168,3	285	-	240	22	8	M20	80	21	16	28	40	53	65	78	90
	3,0	168,3	285	16	240	22	8	M20	70	21	16	22	34	47	59	72	84
200	3,0	219,1	340	-	295	22	12	M20	90	21	24	38	54	69	85	101	116
	3,0	219,1	340	16	295	22	12	M20	70	21	24	28	44	60	75	91	106
200*	3,0	219,1	340	-	295	22	8	M22	90	21	24	38	54	69	85	101	116
	3,0	219,1	340	16	295	22	8	M22	70	21	24	28	44	60	75	91	106

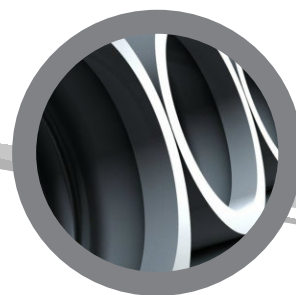
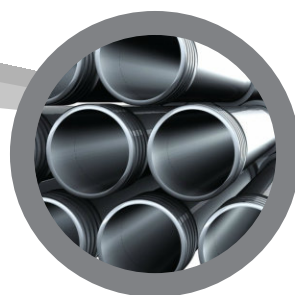
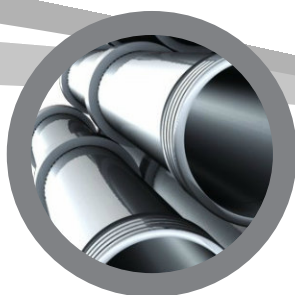
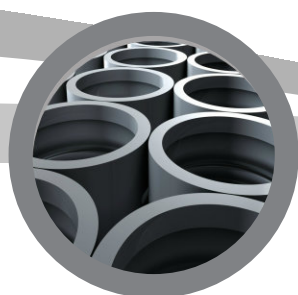
\*) Flange DIN 2632, PN 10

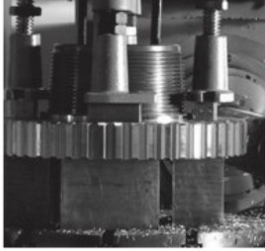
\*\*) Seals, screws, nuts and washers are not included in the standard delivery



1 Stainless steel with welded- on flanges  
(optional galvanized steel, acc. to DIN EN 1461)

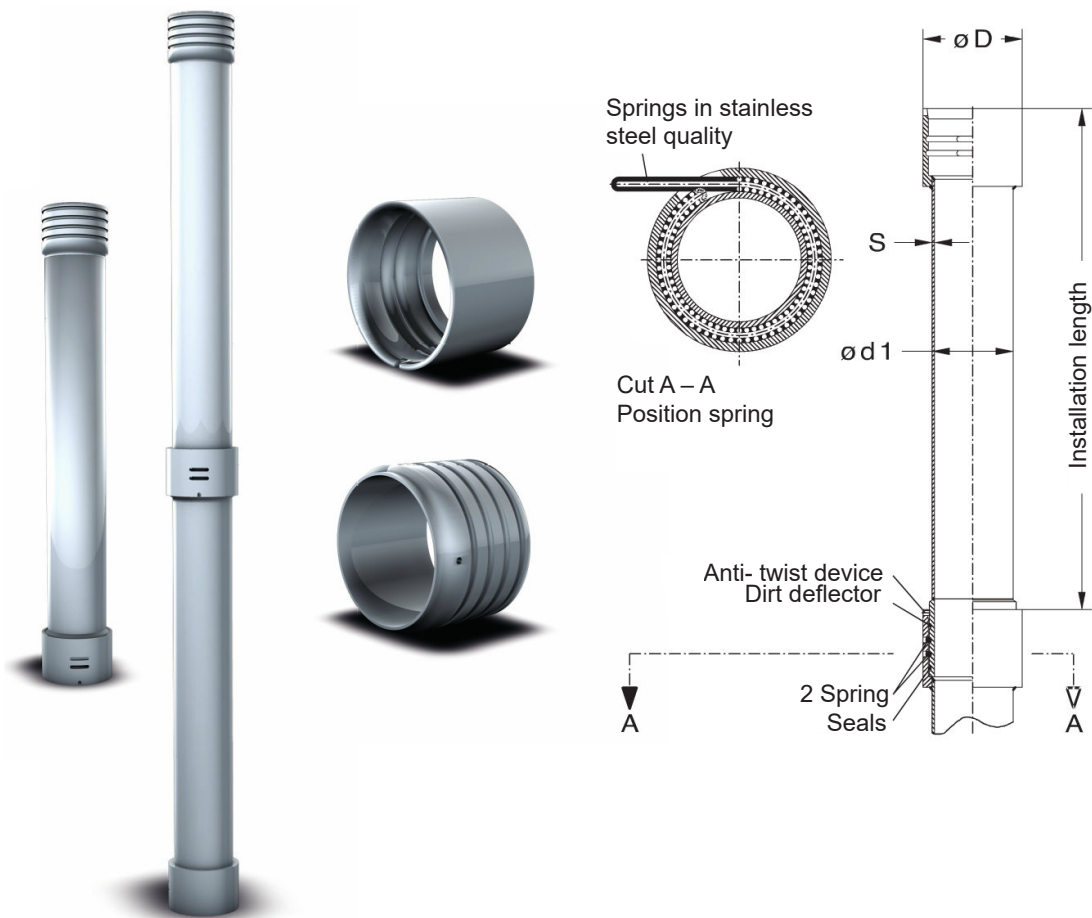
2 Stainless steel with flat flanges, drilled DIN 2576

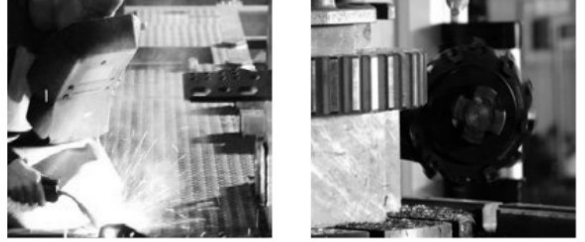




## E+M - RISER PIPES WITH PLUG CONNECTION

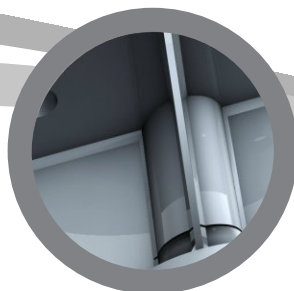
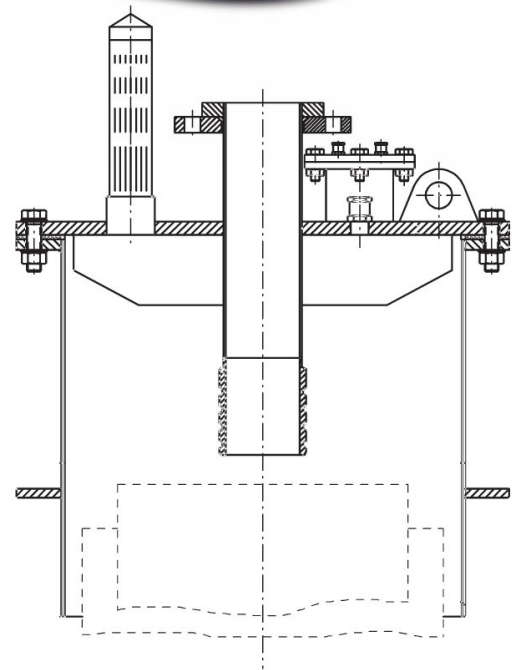
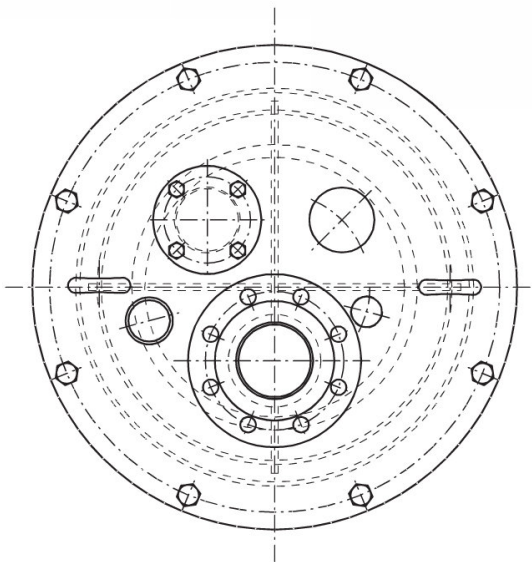
Pipe connector with push- fit socket and springs									
Pipe dimension DIN 2463 Nominal pressure stage				Pipe weight (kg) for installation length L = 1 ... 6					
DN	S	d1	D	1	2	3	4	5	6
50	2,0	60,3	84	5	8	11	14	17	20
65	2,0	76,1	105	7	11	14	18	22	25
80	2,6	88,9	117	9	15	21	26	32	38
100	2,6	114,3	139	12	19	26	33	40	48
125	3,0	139,7	169	16	26	36	46	56	66
150	3,0	168,3	198	20	33	45	58	70	82
200	3,0	219,1	250	28	44	60	75	91	106
250	3,0	273,0	310	38	58	78	98	118	138





## E+M - WELL HEADS

Designs acc. to requirements of our own construction.  
Dimensions, connectors and equipment acc. to the order specifications.  
Stainless steel (optional galvanized steel acc. to DIN EN 1461)

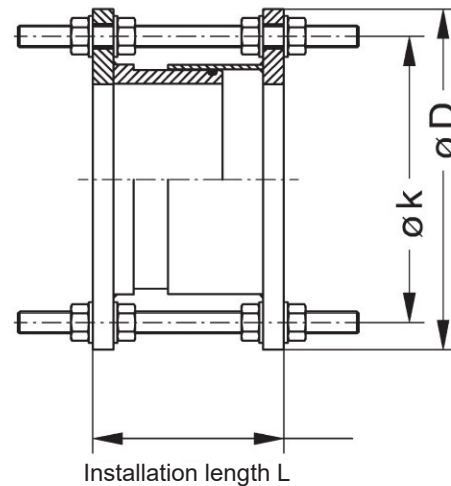
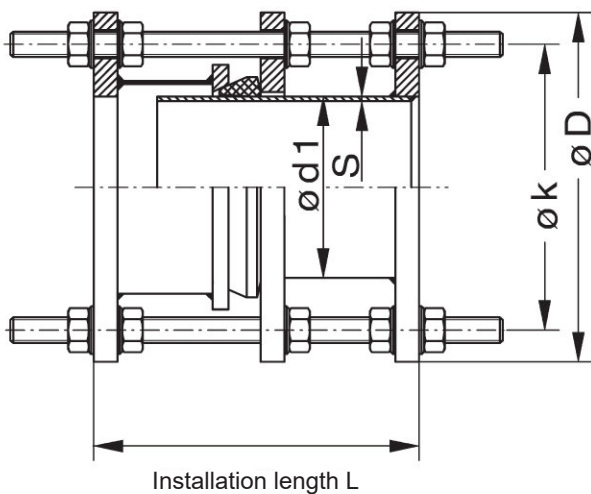




## E+M - FITTING AND EXTENSION PIECES

Typ PASE:  
 transfers the full axial thrust in the pipeline  
 Installation length L = 25 mm  
 Stainless steel (optional galvanized steel acc. to DIN EN 1461)

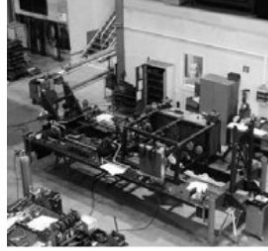
Type UPAS:  
 transfers the full axial thrust in the pipeline  
 Installation length L = 25 mm  
 Stainless steel



Fitting and extension pieces with flat flange									
DN	Pipe DIN 2463		drilled flange acc. to DIN 2576 PN 16			Nuts* DIN 934 Anchor screws*		Installation length Type PASE	Installation length Type UPAS
	S	d1	D	k	d3	Number of holes	Thread	L ± 25 mm	L ± 25 mm
50	2,0	60,3	165	125	18	4	M16	180	140
65	2,0	76,1	185	145	18	4/8	M16	180	140
80	2,6	88,9	200	160	18	8	M16	200	140
100	2,6	114,3	220	180	18	8	M16	200	140
125	3,0	139,7	250	210	18	8	M16	200	140
150	3,0	168,3	285	240	22	8	M20	200	140
200	3,0	219,1	340	295	22	12	M20	220	140
250	3,0	273,0	395	350	22	12	M20	220	140

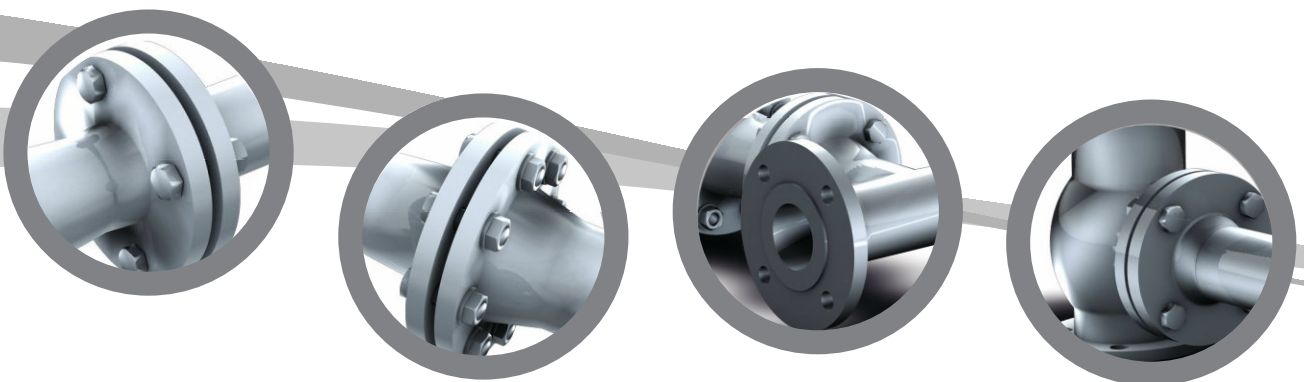
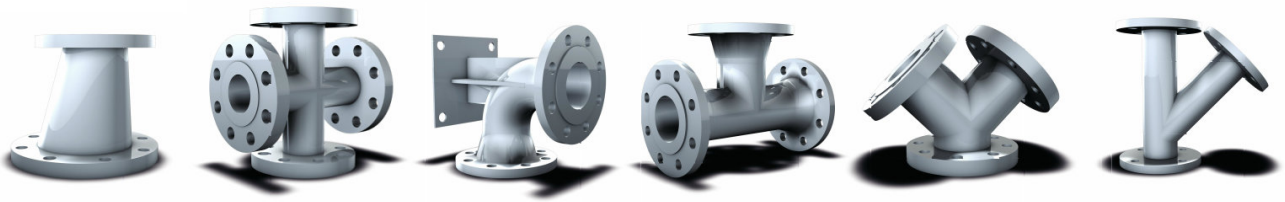
\*) Flange DIN 2632, PN 10

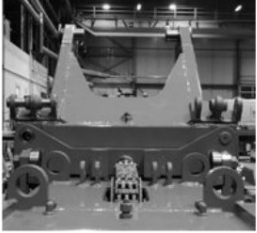
\*\*) Seals, screws, nuts and washers are not included in the standard delivery



## E+M - FITTINGS

Available in all common dimensions.  
With flat or welded- on flanges acc. to customer requirement.  
Stainless steel (optional galvanized steel acc. to DIN EN 1461)





## E+M - STAINLESS STEEL PICKLING

### Corrosion protection with surface luster:

Through the stainless steel pickling process, a brilliant and silk-mat surface of the workpiece is produced.

The stainless steel pickling process is one of the standard applications for many of our own products.

It is a modern and environmentally compatible method to avoid surface corrosion.

We offer this treatment as well for the products our customers. For information regarding the dimensions of the stainless steel workpieces, please refer to the following table.

### Workpiece dimensions for bath pickling:

Length: max. 7.000 mm

Height: max. 1.300 mm

Width: max. 1.500 mm

bigger pieces are pickled through a spray coat system at our staining hall



**E+M Drilling Technologies GmbH**

Köpenicker Allee 123-135 • 10318 Berlin

Tel. +49 (0) 30 - 75 65 44 - 0

Fax: +49 (0) 30 - 75 65 44 - 11

Email: [info@em-drilling.com](mailto:info@em-drilling.com)

Homepage: [www.em-drilling.com](http://www.em-drilling.com)

**E+M Drilling Technologies GmbH**

Hofer Straße 19 • 95030 Hof

Telefon: + 49 (0) 9281 / 14 45 - 0

Telefax: + 49 (0) 9281 / 14 45 - 518 / 587

Email: [info@em-drilling.com](mailto:info@em-drilling.com)

Homepage: [www.em-drilling.com](http://www.em-drilling.com)